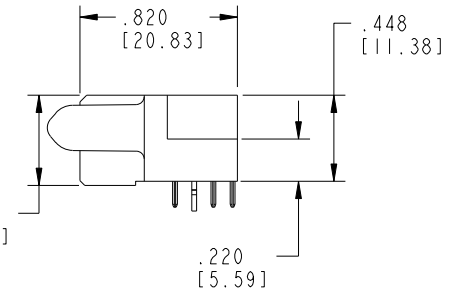
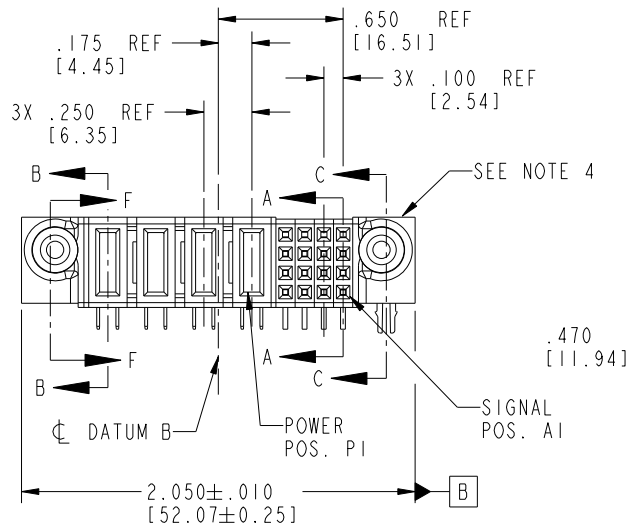
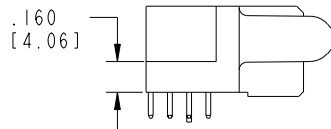
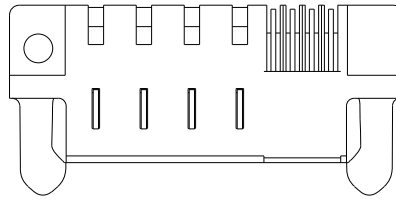


Tous droits strictement réservés. Reproduction ou communication a des tiers interdite sous quelque forme que ce soit sans autorisation écrite du propriétaire. Propriété de c FCI. Droits de reproduction FCI.



All rights strictly reserved. Reproduction or issue to third parties in any form whatever is not permitted without written authority from the proprietor. Property of FCI. Copyright FCI.

PRODUCT NO. 51771-003_- Note: ③	ROWS DCBA	POWER				SIGNAL				E1
		E2	P4	P3	P2	P1	4	3	2	
		PA	PA	PA	PA	HHHH	GGGG	FFFF	EEEE	



CODE	DIM "M" MATING LENGTH	CONTACT TYPE
E	N/A [N/A]	SIGNAL
F	N/A [N/A]	SIGNAL
G	N/A [N/A]	SIGNAL
H	N/A [N/A]	SIGNAL
PA	.042 [1.07]	POWER
HA	N/A [N/A]	HOLD-DOWN

mat'l code SEE NOTE 2				tolerances unless otherwise specified		CUSTOMER		FCI www.fciconnect.com	
ltr	ecn no.	dr	date	linear	.XX±.01/0.X±0.3	COPY		title	
A	V21787	TAB	11/15/02		.XX±.005/0.XX±0.13	projection		16S + 4P	
B	DG05-0123	SJ	06/03/05		.XXX±.0020/0.XXX±0.051	INCH/MM		R/A SOLDER RECEPTACLE	
C	DG08-0251	W D	09/15/08	angles	0°±2°	scale		product family	
				dr	T. BRUNGARD 11/15/02	1:1		PwrBlade	
				engr	M. MOSTOLLER 11/15/02			code	
				chr	M. MOSTOLLER 11/15/02			213	
				appd	M. MOSTOLLER 11/15/02			sheet	
sheet index	revision sheet	C 1	C 2	C 3	C 4			1 of 4	

Pro/E

PDM: Rev: C

STATUS: Released

Printed: Sep 21, 2008

cage code 28556

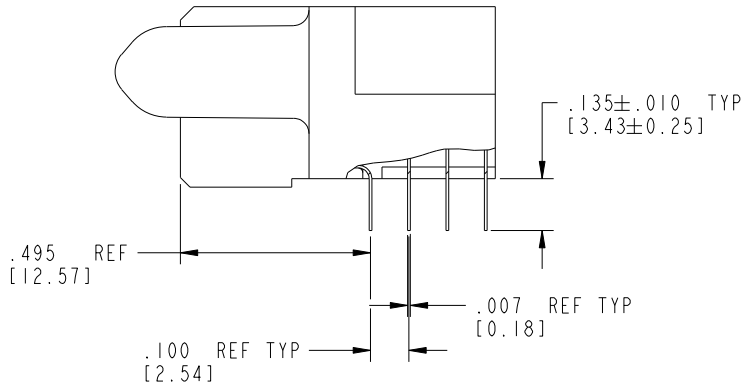
Tous droits strictement réservés. Reproduction ou communication a des tiers interdite sous quelque forme que ce soit sans autorisation écrite du propriétaire. Propriété de c FCI. Droits de reproduction FCI.

All rights strictly reserved. Reproduction or issue to third parties in any form whatever is not permitted without written authority from the proprietor. Property of FCI. Copyright FCI.

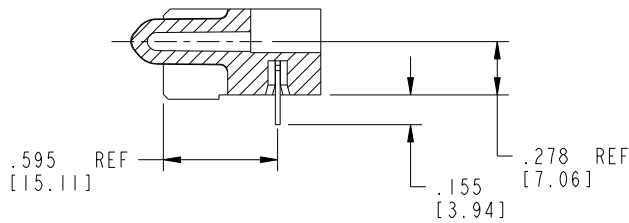


PRODUCT NUMBER

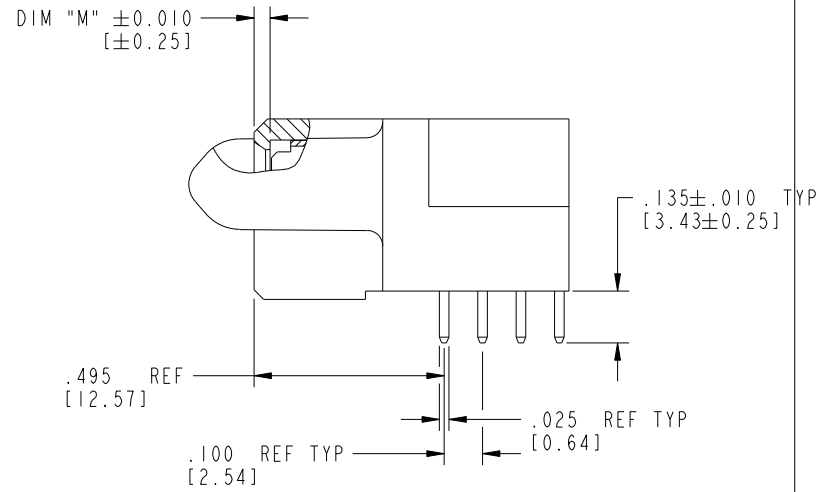
51771-003--
Note: ③



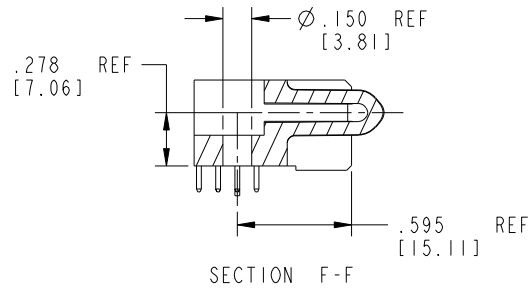
BROKEN-OUT SECTION A-A
SCALE 2:1



SECTION C-C



BROKEN-OUT SECTION B-B
SCALE 2:1



SECTION F-F

mat'l code		SEE NOTE 2		tolerances unless otherwise specified		CUSTOMER		 www.fciconnect.com	
ltr	ecn no.	dr	date	linear	.XX±.01/0.X±0.3	projection	title		
C					.XX±.005/0.XX±0.13		16S + 4P		
				angles	.XXX±.0020/0.XXX±0.051		R/A SOLDER RECEPTACLE		
				dr	0°±2°	INCH/MM	product family		code
				engr	T. BRUNGARD 11/15/02	scale	PwrBlade		213
				chr	M. MOSTOLLER 11/15/02	1:1	size	dwg no	sheet
				appd	M. MOSTOLLER 11/15/02		A	51771-003	2 of 4
sheet index	revision sheet								

Pro/E

PDM: Rev: C

STAT: Released

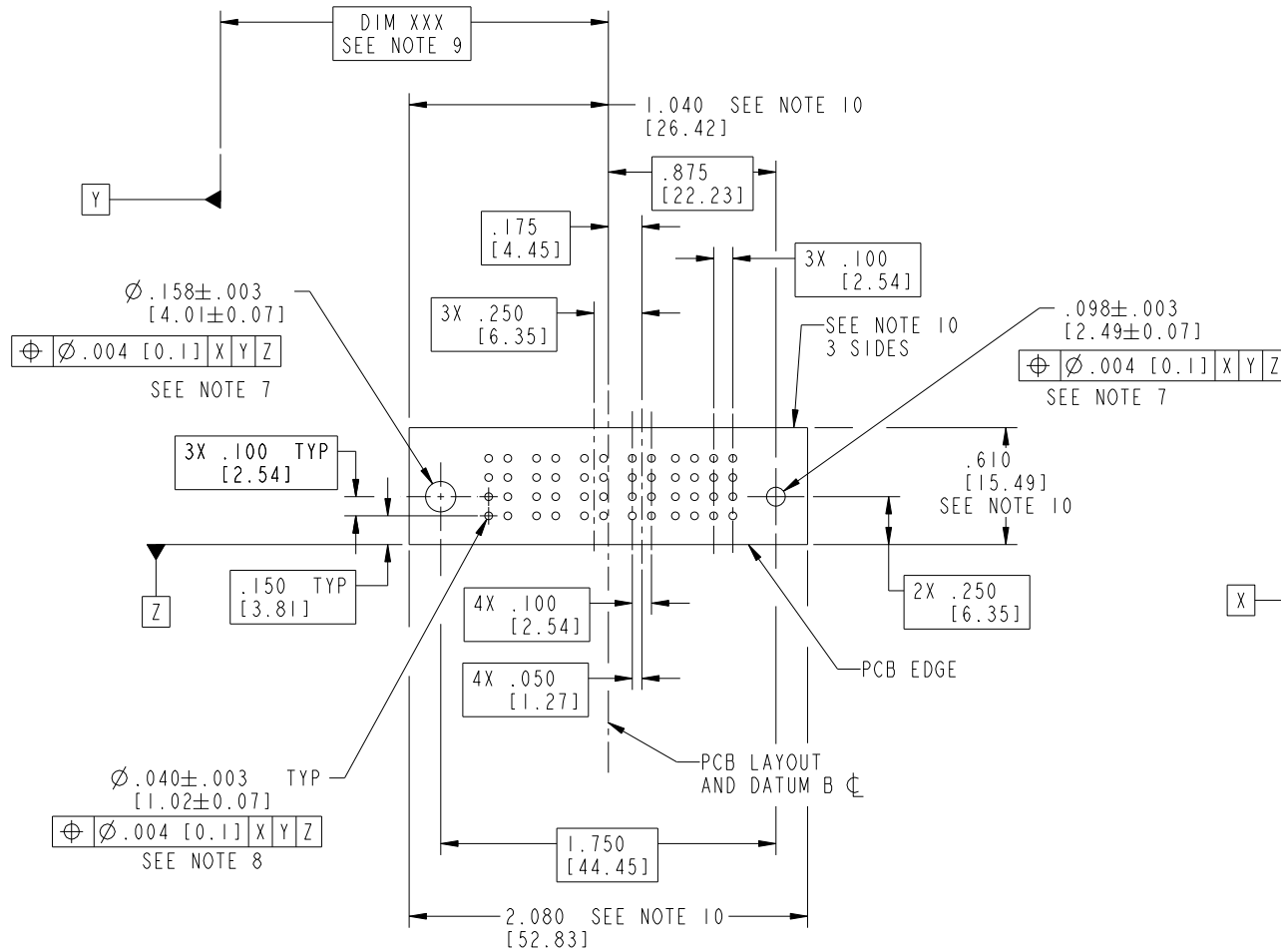
Printed: Sep 21, 2008

Tous droits strictement réservés. Reproduction ou communication a des tiers interdite sous quelque forme que ce soit sans autorisation écrite du propriétaire. Propriété de c FCI. Droits de reproduction FCI.

All rights strictly reserved. Reproduction or issue to third parties in any form whatever is not permitted without written authority from the proprietor. Property of FCI. Copyright FCI.



PRODUCT NUMBER
51771-003--
Note: ③



RECOMMENDED PCB LAYOUT

mat'l code		SEE NOTE 2		tolerances unless otherwise specified		CUSTOMER			
ltr	ecn no.	dr	date	linear	.XX±.01/0.X±0.3	COPY		www.fciconnect.com	
C				angles	.XX±.005/0.XX±0.13 .XXX±.0020/0.XXX±0.051	projection		title 16S + 4P R/A SOLDER RECEPTACLE	
				dr	0°±2°			product family PwrBlade code 213	
				enrg	T. BRUNGARD 11/15/02	INCH/MM		size dwg no 51771-003 sheet 3 of 4	
				chr	M. MOSTOLLER 11/15/02	scale 1:1			
				appd	M. MOSTOLLER 11/15/02				
sheet index	revision sheet								

cage code 22536

Pro/E

PDM: Rev: C

STATUS: Released

Printed: Sep 21, 2008

PRODUCT NUMBER

51771-003--
Note: ③

NOTES:

1. DIMENSIONS AND TOLERANCES ARE IN ACCORDANCE WITH ASME Y14.5M, 1994 UNLESS OTHERWISE SPECIFIED.

CONNECTOR NOTES:

2. HOUSING MATERIAL: UL 94 V-0 GLASS FILLED HIGH-TEMP THERMOPLASTIC
POWER CONTACT MATERIAL: COPPER ALLOY
SIGNAL PIN MATERIAL: COPPER ALLOY

③ 3. SEE ITEM 5 & 6 IN PRINT 10064183 FOR PLATING SPEC OF 51771-003 AND 51771-003LF RESPECTIVELY.

4. MANUFACTURER'S NAME, P/N, AND DATE CODE TO APPEAR ON THIS SURFACE.

5. PRODUCT SPECIFICATION GS-12-149.
APPLICATION SPECIFICATION BUS-20-067.

PCB NOTES:

6. ALL HOLE DIAMETERS ARE FINISHED HOLE SIZE.

7. MOUNTING HOLES, WHERE APPLICABLE, ARE UNPLATED.

8. $\varnothing .0453 \pm .0010$ [1.151 \pm 0.025] DRILLED HOLES PLATED WITH .0003 [0.008] MIN SnPb OVER .001 [0.03] TO .003 [0.08] Cu PLATING TO ACHIEVE $\varnothing .040 \pm .003$ [1.02 \pm .07] HOLE.

9. "DIM XXX" TO BE DETERMINED BY THE CUSTOMER.

10. CONNECTOR KEEP-OUT ZONE.

11. A \triangle SYMBOL WILL BE NEXT TO ANY DIMENSION, VIEW, OR NOTE WHICH HAS BEEN MODIFIED WITH THE CURRENT DRAWING REVISION.

Tous droits strictement réservés. Reproduction ou communication a des tiers interdite sous quelque forme que ce soit sans autorisation écrite du propriétaire. Propriété de c FCI. Droits de reproduction FCI.



All rights strictly reserved. Reproduction or issue to third parties in any form whatever is not permitted without written authority from the proprietor. Property of FCI. Copyright FCI.

mat'l code		SEE NOTE 2		tolerances unless otherwise specified		CUSTOMER			
ltr	ecn no.	dr	date	linear	.XX±.01/0.X±0.3	COPY		www.fciconnect.com	
C				projection	.XXY±.005/0.XX±0.13	INCH/MM		title 16S + 4P R/A SOLDER RECEPTACLE	
				angles	.XXX±.0020/0.XXX±0.051	scale		product family PwrBlade code 213	
				dr	0° ± 2°	1:1		size dwg no 51771-003 sheet 4 of 4	
				enrg	T. BRUNGARD 11/15/02				
				chr	M. MOSTOLLER 11/15/02				
				appd	M. MOSTOLLER 11/15/02				
sheet index	revision sheet								